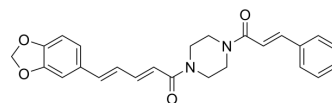


## PD25

Cat. No.:	HY-155622
Molecular Formula:	C <sub>25</sub> H <sub>24</sub> N <sub>2</sub> O <sub>4</sub>
Molecular Weight:	416.47
Target:	Cholinesterase (ChE)
Pathway:	Neuronal Signaling
Storage:	Please store the product under the recommended conditions in the Certificate of Analysis.



## BIOLOGICAL ACTIVITY

Description	PD25 is an AChE and BuChE inhibitor (hAChE IC <sub>50</sub> : 1.58 μM; eeAChE IC <sub>50</sub> : 1.63 μM; eqBuChE IC <sub>50</sub> : 2.39 μM). PD25 also has antioxidant activity, and inhibits DPPH (IC <sub>50</sub> : 29.55 μM). PD25 can be used for research of Alzheimer's disease <sup>[1]</sup> .
IC <sub>50</sub> & Target	1.58 μM, 1.63 μM, 2.39 μM (hAChE, eeAChE, eqBuChE) <sup>[1]</sup>

## REFERENCES

[1]. Bhanukiran K, et al. Discovery of Multitarget-Directed Ligands from Piperidine Alkaloid Piperine as a Cap Group for the Management of Alzheimer's Disease. ACS Chem Neurosci. 2023 Aug 2;14(15):2743-2760.

**Caution: Product has not been fully validated for medical applications. For research use only.**

Tel: 609-228-6898

Fax: 609-228-5909

E-mail: tech@MedChemExpress.com

Address: 1 Deer Park Dr, Suite Q, Monmouth Junction, NJ 08852, USA