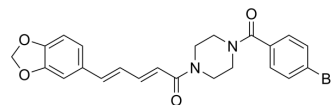


PD10

Cat. No.:	HY-155620
Molecular Formula:	C ₂₃ H ₂₁ BrN ₂ O ₄
Molecular Weight:	469.33
Target:	Cholinesterase (ChE)
Pathway:	Neuronal Signaling
Storage:	Please store the product under the recommended conditions in the Certificate of Analysis.



BIOLOGICAL ACTIVITY

Description	PD10 is an AChE and BuChE inhibitor (hAChE IC ₅₀ : 0.56 μM; eeAChE IC ₅₀ : 0.59 μM; eqBuChE IC ₅₀ : 1.06 μM). PD10 can be used for research of Alzheimer's disease ^[1] .
IC ₅₀ & Target	0.56 μM, 0.59 μM, 1.06 μM (hAChE, eeAChE, eqBuChE) ^[1]

REFERENCES

[1]. Bhanukiran K, et al. Discovery of Multitarget-Directed Ligands from Piperidine Alkaloid Piperine as a Cap Group for the Management of Alzheimer's Disease. ACS Chem Neurosci. 2023 Aug 2;14(15):2743-2760.

Caution: Product has not been fully validated for medical applications. For research use only.

Tel: 609-228-6898

Fax: 609-228-5909

E-mail: tech@MedChemExpress.com

Address: 1 Deer Park Dr, Suite Q, Monmouth Junction, NJ 08852, USA