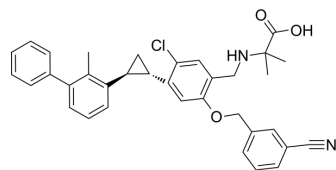


## PD-1/PD-L1-IN-34

Cat. No.:	HY-154869
CAS No.:	2924403-17-6
Molecular Formula:	C <sub>35</sub> H <sub>33</sub> ClN <sub>2</sub> O <sub>3</sub>
Molecular Weight:	565.1
Target:	PD-1/PD-L1
Pathway:	Immunology/Inflammation
Storage:	Please store the product under the recommended conditions in the Certificate of Analysis.



### BIOLOGICAL ACTIVITY

#### Description

PD-1/PD-L1-IN-34 (Compound (1S,2S)-A25) inhibits PD-1/PD-L1 interaction ( $IC_{50}=0.029 \mu\text{M}$ ), with a selected binding affinity with PD-L1 ( $K_D=0.1554 \mu\text{M}$ ). PD-1/PD-L1-IN-34 inhibits tumor growth by activating the immune microenvironment<sup>[1]</sup>.

### REFERENCES

[1]. Jing T, et al. Discovery and Optimization of Novel Biphenyl Derivatives Bearing Cyclopropyl Linkage as Potent Programmed Cell Death-1/Programmed Cell Death-Ligand 1 Inhibitors. *J Med Chem.* 2023 May 25;66(10):6811-6835.

**Caution: Product has not been fully validated for medical applications. For research use only.**

Tel: 609-228-6898

Fax: 609-228-5909

E-mail: tech@MedChemExpress.com

Address: 1 Deer Park Dr, Suite Q, Monmouth Junction, NJ 08852, USA