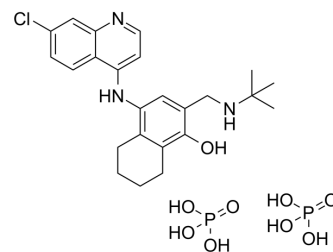


## Naphthoquine phosphate

<b>Cat. No.:</b>	HY-17036
<b>CAS No.:</b>	173531-58-3
<b>Molecular Formula:</b>	C <sub>24</sub> H <sub>34</sub> ClN <sub>3</sub> O <sub>9</sub> P <sub>2</sub>
<b>Molecular Weight:</b>	605.94
<b>Target:</b>	Parasite
<b>Pathway:</b>	Anti-infection
<b>Storage:</b>	4°C, sealed storage, away from moisture * In solvent : -80°C, 6 months; -20°C, 1 month (sealed storage, away from moisture)



### SOLVENT & SOLUBILITY

#### In Vitro

H<sub>2</sub>O : 3.33 mg/mL (5.50 mM; Need ultrasonic)  
DMSO : < 1 mg/mL (ultrasonic) (insoluble or slightly soluble)

Preparing Stock Solutions	Solvent Concentration	Mass	1 mg	5 mg	10 mg
		Concentration	1 mg	5 mg	10 mg
	1 mM		1.6503 mL	8.2516 mL	16.5033 mL
	5 mM		0.3301 mL	1.6503 mL	3.3007 mL
	10 mM		---	---	---

Please refer to the solubility information to select the appropriate solvent.

### BIOLOGICAL ACTIVITY

#### Description

Naphthoquine phosphate is a potent and orally active antimalarial agent. Naphthoquine phosphate has thorough killing function for various schizonts of plasmodia, including resistance of *P. falciparum* to Chloroquine<sup>[1][2]</sup>.

#### In Vivo

The monkeys (Treated with Plasmodium knowlesi) are treated i.g. once daily for 3 days with 6 or 10 mg/kg of Naphthoquine phosphate respectively. At 24 h after Naphthoquine phosphate administration, the parasite reduction rate is higher than 90%<sup>[2]</sup>.

MCE has not independently confirmed the accuracy of these methods. They are for reference only.

### REFERENCES

- [1]. Wang JY, et al. Therapeutic efficacy of naphthoquine phosphate combined with artemisinin against Plasmodium knowlesi. Zhongguo Ji Sheng Chong Xue Yu Ji Sheng Chong Bing Za Zhi. 2008 Dec 30;26(6):442-4.
- [2]. Wang JY, et al. Naphthoquine phosphate and its combination with artemisinin. Acta Trop. 2004 Feb;89(3):375-81.

---

**Caution: Product has not been fully validated for medical applications. For research use only.**

Tel: 609-228-6898

Fax: 609-228-5909

E-mail: [tech@MedChemExpress.com](mailto:tech@MedChemExpress.com)

Address: 1 Deer Park Dr, Suite Q, Monmouth Junction, NJ 08852, USA