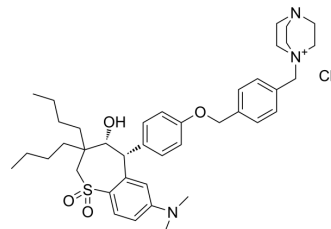


Maralixibat chloride

| | |
|---------------------------|--|
| Cat. No.: | HY-16747 |
| CAS No.: | 228113-66-4 |
| Molecular Formula: | C ₄₀ H ₅₆ ClN ₃ O ₄ S |
| Molecular Weight: | 710.41 |
| Target: | Apical Sodium-Dependent Bile Acid Transporter |
| Pathway: | Membrane Transporter/Ion Channel |
| Storage: | 4°C, sealed storage, away from moisture * In solvent : -80°C, 6 months; -20°C, 1 month (sealed storage, away from moisture) |



SOLVENT & SOLUBILITY

In Vitro

DMSO : 50 mg/mL (70.38 mM; ultrasonic and warming and heat to 60°C)

| Solvent | Mass | Concentration | | |
|---------------------------|-------|---------------|-----------|------------|
| | | 1 mg | 5 mg | 10 mg |
| Preparing Stock Solutions | 1 mM | 1.4076 mL | 7.0382 mL | 14.0764 mL |
| | 5 mM | 0.2815 mL | 1.4076 mL | 2.8153 mL |
| | 10 mM | 0.1408 mL | 0.7038 mL | 1.4076 mL |

Please refer to the solubility information to select the appropriate solvent.

BIOLOGICAL ACTIVITY

Description

Maralixibat (SHP625) chloride is an orally active ileal bile acid transporter (IBAT) inhibitor. Maralixibat chloride can be used for the research of rare cholestatic liver diseases including Alagille syndrome (ALGS), progressive familial intrahepatic cholestasis (PFIC) and biliary atresia^{[1][2]}.

In Vivo

Maralixibat chloride reduces elevations in sBA levels, improves liver function, and reduces liver tissue damage, in a rat partial bile duct ligation model of cholestasis^[2].
MCE has not independently confirmed the accuracy of these methods. They are for reference only.

REFERENCES

[1]. Mayo MJ, et al. A Randomized, Controlled, Phase 2 Study of Maralixibat in the Treatment of Itching Associated With Primary Biliary Cholangitis. *HepatoL Commun.* 2019 Feb 1;3(3):365-381.

[2]. Shirley M. Maralixibat: First Approval [published correction appears in *Drugs.* 2021 Dec 6;]. *Drugs.* 2022;82(1):71-76.

Caution: Product has not been fully validated for medical applications. For research use only.

Tel: 609-228-6898

Fax: 609-228-5909

E-mail: tech@MedChemExpress.com

Address: 1 Deer Park Dr, Suite Q, Monmouth Junction, NJ 08852, USA