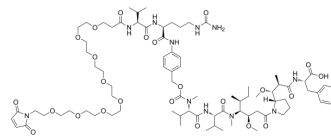


## Mal-PEG8-Val-Cit-PAB-MMAF

Cat. No.:	HY-156758		
Molecular Formula:	C <sub>81</sub> H <sub>129</sub> N <sub>11</sub> O <sub>24</sub>		
Molecular Weight:	1640.95		
Target:	Drug-Linker Conjugates for ADC		
Pathway:	Antibody-drug Conjugate/ADC Related		
Storage:	Powder	-20°C	3 years
		4°C	2 years
	In solvent	-80°C	6 months
		-20°C	1 month



### BIOLOGICAL ACTIVITY

#### Description

Mal-PEG8-Val-Cit-PAB-MMAF is a drug-linker conjugate for ADC. Mal-PEG8-Val-Cit-PAB-MMAF contains a cleavable ADC linker and a potent tubulin inhibitor MMAE (HY-15162)<sup>[1]</sup>.

### REFERENCES

[1]. Beck A, et al. Strategies and challenges for the next generation of antibody-drug conjugates. *Nat Rev Drug Discov.* 2017 May;16(5):315-337.

**Caution: Product has not been fully validated for medical applications. For research use only.**

Tel: 609-228-6898

Fax: 609-228-5909

E-mail: tech@MedChemExpress.com

Address: 1 Deer Park Dr, Suite Q, Monmouth Junction, NJ 08852, USA