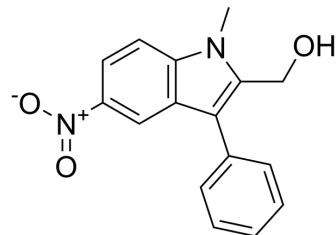


ML354

Cat. No.:	HY-19973
CAS No.:	89159-60-4
Molecular Formula:	C ₁₆ H ₁₄ N ₂ O ₃
Molecular Weight:	282.29
Target:	Protease Activated Receptor (PAR)
Pathway:	GPCR/G Protein
Storage:	Please store the product under the recommended conditions in the Certificate of Analysis.



BIOLOGICAL ACTIVITY

Description	ML354 is a selective PAR4 antagonist with an IC ₅₀ of 140 nM ^[1] .
IC ₅₀ & Target	PAR4

REFERENCES

[1]. Wen W, et al. Substituted indoles as selective protease activated receptor 4 (PAR-4) antagonists: Discovery and SAR of ML354. *Bioorg Med Chem Lett.* 2014 Oct 1;24(19):4708-4713.

Caution: Product has not been fully validated for medical applications. For research use only.

Tel: 609-228-6898

Fax: 609-228-5909

E-mail: tech@MedChemExpress.com

Address: 1 Deer Park Dr, Suite Q, Monmouth Junction, NJ 08852, USA