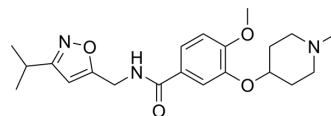


## ML352

Cat. No.:	HY-16934		
CAS No.:	1649450-12-3		
Molecular Formula:	C <sub>21</sub> H <sub>29</sub> N <sub>3</sub> O <sub>4</sub>		
Molecular Weight:	387.47		
Target:	Cholinesterase (ChE)		
Pathway:	Neuronal Signaling		
Storage:	Pure form	-20°C	3 years
		4°C	2 years
	In solvent	-80°C	6 months
		-20°C	1 month



### SOLVENT & SOLUBILITY

#### In Vitro

DMSO : 250 mg/mL (645.21 mM; Need ultrasonic)

Concentration	Solvent	Mass		
		1 mg	5 mg	10 mg
Preparing Stock Solutions	1 mM	2.5808 mL	12.9042 mL	25.8084 mL
	5 mM	0.5162 mL	2.5808 mL	5.1617 mL
	10 mM	0.2581 mL	1.2904 mL	2.5808 mL

Please refer to the solubility information to select the appropriate solvent.

### BIOLOGICAL ACTIVITY

#### Description

ML352 is a noncompetitive inhibitor of the presynaptic choline transporter (CHT) with K<sub>i</sub> values of 92 and 166 nM for HEK293 cells expressing human CHT and mouse forebrain synaptosomes, respectively<sup>[1]</sup>.

### REFERENCES

[1]. Ennis EA, Wright J, Retzlaff CL, McManus OB, Lin Z, Huang X, et al. Identification and characterization of ML352: a novel, noncompetitive inhibitor of the presynaptic choline transporter. ACS Chem Neurosci. 2015 Mar 18;6(3):417-27.

**Caution: Product has not been fully validated for medical applications. For research use only.**

Tel: 609-228-6898

Fax: 609-228-5909

E-mail: tech@MedChemExpress.com

Address: 1 Deer Park Dr, Suite Q, Monmouth Junction, NJ 08852, USA