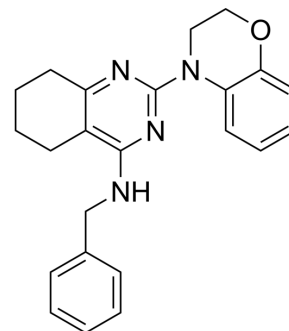


ML241

Cat. No.:	HY-19797
CAS No.:	1346528-06-0
Molecular Formula:	C ₂₃ H ₂₄ N ₄ O
Molecular Weight:	372.46
Target:	p97
Pathway:	Cell Cycle/DNA Damage
Storage:	4°C, protect from light, stored under nitrogen * In solvent : -80°C, 6 months; -20°C, 1 month (protect from light, stored under nitrogen)



BIOLOGICAL ACTIVITY

Description	ML241 is a potent, selective and competitive p97 ATPase inhibitor with an IC ₅₀ of 0.11 μM. ML241 can be used for the research of cancer ^[1] .
IC ₅₀ & Target	IC ₅₀ : 0.11 μM (p97 ATPase) ^[1] Ki: 0.35 μM (p97 ATPase) ^[1]

REFERENCES

[1]. Chou TF, et al. Structure-activity relationship study reveals ML240 and ML241 as potent and selective inhibitors of p97 ATPase. ChemMedChem. 2013 Feb;8(2):297-312.

Caution: Product has not been fully validated for medical applications. For research use only.

Tel: 609-228-6898

Fax: 609-228-5909

E-mail: tech@MedChemExpress.com

Address: 1 Deer Park Dr, Suite Q, Monmouth Junction, NJ 08852, USA