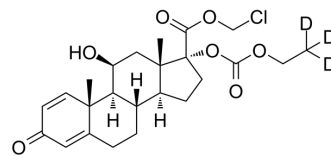


Loteprednol Etabonate-d3

Cat. No.:	HY-17358S1
Molecular Formula:	C ₂₄ H ₂₈ D ₃ ClO ₇
Molecular Weight:	469.97
Target:	Glucocorticoid Receptor; Bacterial; Antibiotic
Pathway:	GPCR/G Protein; Anti-infection
Storage:	Please store the product under the recommended conditions in the Certificate of Analysis.



BIOLOGICAL ACTIVITY

Description	Loteprednol Etabonate-d3 is the deuterium labeled Loteprednol Etabonate. Loteprednol etabonate (LE) is an orally active "soft" steroid belonging to a unique class of glucocorticoids. Loteprednol etabonate (LE) exhibits anti-inflammatory activity and has been used in optometry and ophthalmology ^{[1][2][3]} .
In Vitro	Stable heavy isotopes of hydrogen, carbon, and other elements have been incorporated into drug molecules, largely as tracers for quantitation during the drug development process. Deuteration has gained attention because of its potential to affect the pharmacokinetic and metabolic profiles of drugs ^[1] . MCE has not independently confirmed the accuracy of these methods. They are for reference only.

REFERENCES

- [1]. Russak EM, et al. Impact of Deuterium Substitution on the Pharmacokinetics of Pharmaceuticals. *Ann Pharmacother*. 2019;53(2):211-216.
- [2]. Noble S, Goa KL. Loteprednol etabonate: clinical potential in the management of ocular inflammation. *BioDrugs*. 1998 Oct;10(4):329-39.
- [3]. Szelenyi I, Hochhaus G, Heer S et al. Loteprednol etabonate: a soft steroid for the treatment of allergic diseases of the airways. *Drugs Today (Barc)*. 2000 May;36(5):313-20.
- [4]. Howes JF. Loteprednol etabonate: a review of ophthalmic clinical studies. *Pharmazie*. 2000 Mar;55(3):178-83.
- [5]. Pavesio CE, Decory HH. Treatment of ocular inflammatory conditions with loteprednol etabonate. *Br J Ophthalmol*. 2008 Apr;92(4):455-9.
- [6]. Comstock TL, Decory HH. Advances in corticosteroid therapy for ocular inflammation: loteprednol etabonate. *Int J Inflam*. 2012;2012:789623.

Caution: Product has not been fully validated for medical applications. For research use only.

Tel: 609-228-6898

Fax: 609-228-5909

E-mail: tech@MedChemExpress.com

Address: 1 Deer Park Dr, Suite Q, Monmouth Junction, NJ 08852, USA