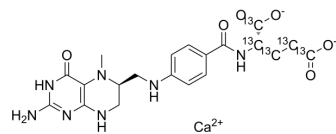


Levomefolate-¹³C₅ calcium

Cat. No.:	HY-17383S
Molecular Formula:	C ₁₅ ¹³ C ₅ H ₁₈ CaN ₇ O ₆
Molecular Weight:	497.44
Target:	Antifolate; Isotope-Labeled Compounds
Pathway:	Cell Cycle/DNA Damage; Others
Storage:	Please store the product under the recommended conditions in the Certificate of Analysis.



BIOLOGICAL ACTIVITY

Description	Levomefolate- ¹³ C ₅ (calcium) is the ¹³ C-labeled Levomefolate (calcium). Levomefolate calcium is an artificial form of folate.
In Vitro	Stable heavy isotopes of hydrogen, carbon, and other elements have been incorporated into drug molecules, largely as tracers for quantitation during the drug development process. Deuteration has gained attention because of its potential to affect the pharmacokinetic and metabolic profiles of drugs ^[1] . MCE has not independently confirmed the accuracy of these methods. They are for reference only.

REFERENCES

- [1]. Russak EM, et al. Impact of Deuterium Substitution on the Pharmacokinetics of Pharmaceuticals. *Ann Pharmacother*. 2019;53(2):211-216.
- [2]. Fruzzetti F. Beyaz?: an oral contraceptive fortified with folate. *Womens Health (Lond Engl)*. 2012 Jan;8(1):13-9.
- [3]. Wiesinger H, Eydeler U, Richard F, et al. Bioequivalence evaluation of a folate-supplemented oral contraceptive containing ethinylestradiol/drospirenone/levomefolate calcium versus ethinylestradiol/drospirenone and levomefolate calcium alone. *Clin Drug Investig*. 2012 Oct 1;32(10):673-84.
- [4]. Hartmut Blodea, Christine Klippingb, Frank Richardc, et al. Bioequivalence study of an oral contraceptive containing ethinylestradiol/drospirenone/levomefolate calcium relative to ethinylestradiol/drospirenone and to levomefolate calcium alone. *Contraception*. 2012, 85(2), :177-184
- [5]. Rapkin RB, Creinin MD. The combined oral contraceptive pill containing drospirenone and ethinyl estradiol plus levomefolate calcium. *Expert Opin Pharmacother*. 2011 Oct;12(15):2403-10. doi: 10.1517/14656566.2011.610791.
- [6]. Levomefolic_acid

Caution: Product has not been fully validated for medical applications. For research use only.

Tel: 609-228-6898

Fax: 609-228-5909

E-mail: tech@MedChemExpress.com

Address: 1 Deer Park Dr, Suite Q, Monmouth Junction, NJ 08852, USA