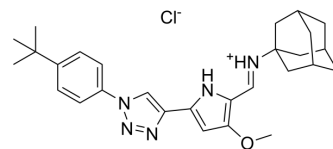


Lactate transportor 1

Cat. No.:	HY-155382
Molecular Formula:	C ₂₈ H ₃₆ ClN ₅ O
Molecular Weight:	494.07
Target:	Monocarboxylate Transporter
Pathway:	Membrane Transporter/Ion Channel
Storage:	Please store the product under the recommended conditions in the Certificate of Analysis.



BIOLOGICAL ACTIVITY

Description

Lactate transportor 1 (compound 1) is an active lactate transporter in living cells. Lactate transportor 1 displays the cytotoxic effect, with IC₅₀ values of 3.36, 3.27, 5.58 and 7.66 μM in HeLa, CAL27, MCF7 and MCF10A, respectively. Lactate transportor 1 has an additive effect with Cisplatin (HY-17394) observed in HeLa cells^[1].

IC₅₀ & Target

3.36, 3.27, 5.58 and 7.66 μM (HeLa, CAL27, MCF7 and MCF10A)^[1]

REFERENCES

[1]. Alonso-Carrillo D, et al. Small molecule anion carriers facilitate lactate transport in model liposomes and cells. *iScience*. 2023;26(10):107898. Published 2023 Sep 14.

Caution: Product has not been fully validated for medical applications. For research use only.

Tel: 609-228-6898

Fax: 609-228-5909

E-mail: tech@MedChemExpress.com

Address: 1 Deer Park Dr, Suite Q, Monmouth Junction, NJ 08852, USA