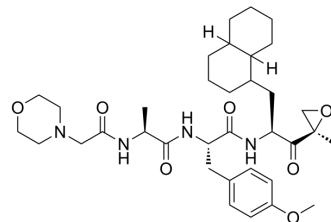


## LU-002i

Cat. No.:	HY-157034
CAS No.:	1838705-22-8
Molecular Formula:	C <sub>35</sub> H <sub>52</sub> N <sub>4</sub> O <sub>7</sub>
Molecular Weight:	640.81
Target:	Proteasome
Pathway:	Metabolic Enzyme/Protease
Storage:	Please store the product under the recommended conditions in the Certificate of Analysis.



## BIOLOGICAL ACTIVITY

### Description

LU-002i is a subunit-selective human proteasome  $\beta$ 2c and  $\beta$ 2i inhibitor with an IC<sub>50</sub> value of 220 nM for  $\beta$ 2i<sup>[1]</sup>.

## REFERENCES

[1]. Xin BT, et al. Structure-Based Design of Inhibitors Selective for Human Proteasome  $\beta$ 2c or  $\beta$ 2i Subunits. J Med Chem. 2019 Feb 14;62(3):1626-1642.

**Caution: Product has not been fully validated for medical applications. For research use only.**

Tel: 609-228-6898

Fax: 609-228-5909

E-mail: tech@MedChemExpress.com

Address: 1 Deer Park Dr, Suite Q, Monmouth Junction, NJ 08852, USA