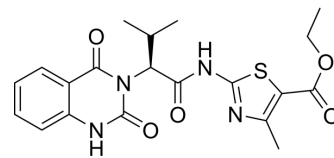


Kif15-IN-1

| | | | |
|---------------------------|---|-------|---------|
| Cat. No.: | HY-15948 | | |
| CAS No.: | 672926-32-8 | | |
| Molecular Formula: | C ₂₀ H ₂₂ N ₄ O ₅ S | | |
| Molecular Weight: | 430.48 | | |
| Target: | Kinesin | | |
| Pathway: | Cell Cycle/DNA Damage; Cytoskeleton | | |
| Storage: | Powder | -20°C | 3 years |
| | | 4°C | 2 years |
| | In solvent | -80°C | 2 years |
| | | -20°C | 1 year |



SOLVENT & SOLUBILITY

In Vitro

DMSO : ≥ 100 mg/mL (232.30 mM)
 * "≥" means soluble, but saturation unknown.

| Preparing Stock Solutions | Solvent | | 1 mg | 5 mg | 10 mg |
|---------------------------|---------------|------|-----------|------------|------------|
| | Concentration | Mass | | | |
| | 1 mM | | 2.3230 mL | 11.6149 mL | 23.2299 mL |
| | 5 mM | | 0.4646 mL | 2.3230 mL | 4.6460 mL |
| | 10 mM | | 0.2323 mL | 1.1615 mL | 2.3230 mL |

Please refer to the solubility information to select the appropriate solvent.

In Vivo

- Add each solvent one by one: 10% DMSO >> 40% PEG300 >> 5% Tween-80 >> 45% saline
 Solubility: ≥ 2.5 mg/mL (5.81 mM); Clear solution
- Add each solvent one by one: 10% DMSO >> 90% corn oil
 Solubility: ≥ 2.5 mg/mL (5.81 mM); Clear solution

BIOLOGICAL ACTIVITY

Description

Kif15-IN-1 is an inhibitor of the mitotic Kinesin family member 15 (Kif15), and is used for the research of cellular proliferative diseases.

IC₅₀ & Target

KIF15

In Vitro

Kif15-IN-1 (Compound 10) is an inhibitor of the mitotic kinesin Hs Kif15, with the potential activities against cellular proliferative diseases such as cancer, hyperplasias, cardiac hypertrophy, immune disorders and inflammation^[1]. MCE has not independently confirmed the accuracy of these methods. They are for reference only.

CUSTOMER VALIDATION

- Cell Mol Life Sci. 2022 Jul 14;79(8):422.

See more customer validations on www.MedChemExpress.com

REFERENCES

- [1]. Preparation of quinazolinones as Kif15 kinesin inhibitors for treating cellular proliferative disorders. Pat. Appl. Publ. (2004), US 20040053948 A1 20040318.
-

Caution: Product has not been fully validated for medical applications. For research use only.

Tel: 609-228-6898

Fax: 609-228-5909

E-mail: tech@MedChemExpress.com

Address: 1 Deer Park Dr, Suite Q, Monmouth Junction, NJ 08852, USA