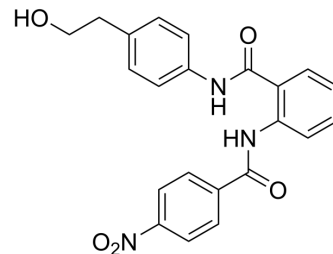


## KS176

Cat. No.:	HY-19753		
CAS No.:	1253452-78-6		
Molecular Formula:	C <sub>22</sub> H <sub>19</sub> N <sub>3</sub> O <sub>5</sub>		
Molecular Weight:	405.4		
Target:	BCRP		
Pathway:	Membrane Transporter/Ion Channel		
Storage:	Powder	-20°C	3 years
		4°C	2 years
	In solvent	-80°C	2 years
		-20°C	1 year



### SOLVENT & SOLUBILITY

#### In Vitro

DMSO : ≥ 35 mg/mL (86.33 mM)  
 \* "≥" means soluble, but saturation unknown.

	Solvent Concentration	Mass		
		1 mg	5 mg	10 mg
Preparing Stock Solutions	1 mM	2.4667 mL	12.3335 mL	24.6670 mL
	5 mM	0.4933 mL	2.4667 mL	4.9334 mL
	10 mM	0.2467 mL	1.2333 mL	2.4667 mL

Please refer to the solubility information to select the appropriate solvent.

### BIOLOGICAL ACTIVITY

#### Description

KS176 is a potent and selective inhibitor of the breast cancer resistance protein (BCRP) multidrug transporter (IC<sub>50</sub> values are 0.59 and 1.39 μM in Pheo A and Hoechst 33342 assays respectively). Displays no inhibitory activity against P-gp or MRP1. IC<sub>50</sub> value: 0.59 (in Pheo A assay), 1.39 μM (in Hoechst 33342 assay). Target: BCRP. The more detailed information please refer to Compound 9 in the reference.

### CUSTOMER VALIDATION

- Crit Rev Anal Chem. 2021 Mar 10;1-15.

See more customer validations on [www.MedChemExpress.com](http://www.MedChemExpress.com)

---

## REFERENCES

---

[1]. Pick A, et al. Specific inhibitors of the breast cancer resistance protein (BCRP). ChemMedChem. 2010 Sep 3;5(9):1498-505.

---

**Caution: Product has not been fully validated for medical applications. For research use only.**

Tel: 609-228-6898

Fax: 609-228-5909

E-mail: [tech@MedChemExpress.com](mailto:tech@MedChemExpress.com)

Address: 1 Deer Park Dr, Suite Q, Monmouth Junction, NJ 08852, USA