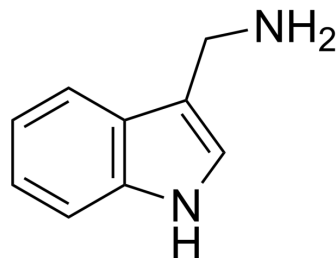


Indole-3-methanamine

Cat. No.:	HY-33893
CAS No.:	22259-53-6
Molecular Formula:	C ₉ H ₁₀ N ₂
Molecular Weight:	146.19
Target:	Endogenous Metabolite
Pathway:	Metabolic Enzyme/Protease
Storage:	-20°C, protect from light * In solvent : -80°C, 6 months; -20°C, 1 month (protect from light)



SOLVENT & SOLUBILITY

In Vitro	DMSO : 50 mg/mL (342.02 mM; Need ultrasonic)					
	Preparing Stock Solutions	Solvent	Mass	1 mg	5 mg	10 mg
		Concentration				
		1 mM		6.8404 mL	34.2021 mL	68.4041 mL
		5 mM		1.3681 mL	6.8404 mL	13.6808 mL
10 mM		0.6840 mL	3.4202 mL	6.8404 mL		
Please refer to the solubility information to select the appropriate solvent.						
In Vivo	1. Add each solvent one by one: 10% DMSO >> 40% PEG300 >> 5% Tween-80 >> 45% saline Solubility: ≥ 2.5 mg/mL (17.10 mM); Clear solution 2. Add each solvent one by one: 10% DMSO >> 90% (20% SBE-β-CD in saline) Solubility: 2.5 mg/mL (17.10 mM); Suspended solution; Need ultrasonic					

BIOLOGICAL ACTIVITY

Description	Indole-3-methanamine is a potential biomarker for the consumption of these foods such as barley, cereals, and cereal product ^[1] .
--------------------	---

REFERENCES

[1]. Indole-3-methanamine.

Caution: Product has not been fully validated for medical applications. For research use only.

Tel: 609-228-6898

Fax: 609-228-5909

E-mail: tech@MedChemExpress.com

Address: 1 Deer Park Dr, Suite Q, Monmouth Junction, NJ 08852, USA