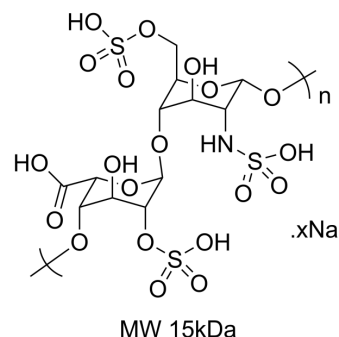


## Heparin sodium salt (MW 15kDa)

<b>Cat. No.:</b>	HY-17567C
<b>CAS No.:</b>	9041-08-1
<b>Molecular Formula:</b>	$(C_{14}H_{25}NO_{20}S_3)_n \cdot xNa$
<b>Target:</b>	Thrombin; Factor Xa; Autophagy
<b>Pathway:</b>	Metabolic Enzyme/Protease; Autophagy
<b>Storage:</b>	4°C, sealed storage, away from moisture * In solvent : -80°C, 6 months; -20°C, 1 month (sealed storage, away from moisture)



### SOLVENT & SOLUBILITY

<b>In Vitro</b>	H <sub>2</sub> O : 20 mg/mL (Need ultrasonic) DMSO : < 1 mg/mL (ultrasonic;warming;heat to 80°C) (insoluble or slightly soluble)
<b>In Vivo</b>	1. Add each solvent one by one: PBS Solubility: 25 mg/mL (Infinity mM); Clear solution; Need ultrasonic

### BIOLOGICAL ACTIVITY

<b>Description</b>	Heparin sodium salt (MW 15kDa) (Sodium heparin (MW 15kDa)) is a polymer of Heparin with the molecular weight of 15kDa. Heparin sodium salt is an anticoagulant which binds reversibly to antithrombin III (ATIII) and greatly accelerates the rate at which ATIII inactivates coagulation enzymes thrombin factor IIa and factor Xa <sup>[1]</sup> .
<b>In Vitro</b>	Heparin sodium salt (MW 15kDa) (0-150 μM, 72 h) shows angiogenic response (an increase in vascularization) in late Chorioallantoic Membrane (CAM) assay <sup>[2]</sup> . MCE has not independently confirmed the accuracy of these methods. They are for reference only.

### CUSTOMER VALIDATION

- J Neurochem. 2022 Oct 21.

See more customer validations on [www.MedChemExpress.com](http://www.MedChemExpress.com)

### REFERENCES

- [1]. REMA, et al. Angiogenic efficacy of Heparin on chick chorioallantoic membrane. *Vascular Cell*, [S.l.], v. 4, n. 1, p. 8, apr. 2012. ISSN 2045-824X.
- [2]. Capila I, et al. Heparin-protein interactions. *Angew Chem Int Ed Engl*. 2002 Feb 1;41(3):391-412.

---

**Caution: Product has not been fully validated for medical applications. For research use only.**

Tel: 609-228-6898

Fax: 609-228-5909

E-mail: [tech@MedChemExpress.com](mailto:tech@MedChemExpress.com)

Address: 1 Deer Park Dr, Suite Q, Monmouth Junction, NJ 08852, USA