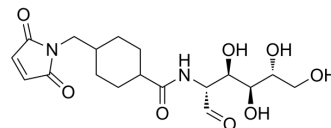


## Glucose-maleimide

Cat. No.:	HY-156518
CAS No.:	2093979-63-4
Molecular Formula:	C <sub>18</sub> H <sub>26</sub> N <sub>2</sub> O <sub>8</sub>
Molecular Weight:	398.41
Target:	Biochemical Assay Reagents
Pathway:	Others
Storage:	4°C, sealed storage, away from moisture and light * In solvent : -80°C, 6 months; -20°C, 1 month (sealed storage, away from moisture and light)



### BIOLOGICAL ACTIVITY

#### Description

Glucose-maleimide is a glycoconjugate consisting of a glucose molecule and a maleimide group of a linker molecule. Glucose-maleimide can be used in the preparation of glucose-responsive insulin delivery compositions, thereby conjugating glucose to insulin<sup>[1]</sup>.

### REFERENCES

[1]. Zhen GU, et al. Glucose responsive insulin delivery compositions and methods. Patent WO2017124102A1.

**Caution: Product has not been fully validated for medical applications. For research use only.**

Tel: 609-228-6898

Fax: 609-228-5909

E-mail: tech@MedChemExpress.com

Address: 1 Deer Park Dr, Suite Q, Monmouth Junction, NJ 08852, USA