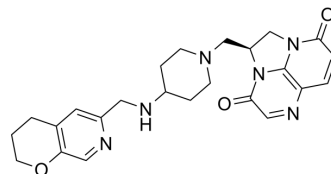


Gepotidacin (S enantiomer)

Cat. No.:	HY-16742A		
CAS No.:	2319789-82-5		
Molecular Formula:	C ₂₄ H ₂₈ N ₆ O ₃		
Molecular Weight:	448.52		
Target:	Bacterial		
Pathway:	Anti-infection		
Storage:	Powder	-20°C	3 years
		4°C	2 years
	In solvent	-80°C	6 months
		-20°C	1 month



SOLVENT & SOLUBILITY

In Vitro	DMSO : 5 mg/mL (11.15 mM; ultrasonic and warming and heat to 60°C)				
		Solvent Concentration	Mass 1 mg	5 mg	10 mg
	Preparing Stock Solutions	1 mM	2.2296 mL	11.1478 mL	22.2956 mL
		5 mM	0.4459 mL	2.2296 mL	4.4591 mL
10 mM		0.2230 mL	1.1148 mL	2.2296 mL	
Please refer to the solubility information to select the appropriate solvent.					
In Vivo	<ol style="list-style-type: none"> Add each solvent one by one: 10% DMSO >> 40% PEG300 >> 5% Tween-80 >> 45% saline Solubility: ≥ 0.5 mg/mL (1.11 mM); Clear solution Add each solvent one by one: 10% DMSO >> 90% (20% SBE-β-CD in saline) Solubility: ≥ 0.5 mg/mL (1.11 mM); Clear solution Add each solvent one by one: 10% DMSO >> 90% corn oil Solubility: ≥ 0.5 mg/mL (1.11 mM); Clear solution 				

BIOLOGICAL ACTIVITY

Description	Gepotidacin S enantiomer is an S enantiomer of gepotidacin.
In Vitro	Gepotidacin S enantiomer is an S enantiomer of gepotidacin. MCE has not independently confirmed the accuracy of these methods. They are for reference only.

Caution: Product has not been fully validated for medical applications. For research use only.

Tel: 609-228-6898

Fax: 609-228-5909

E-mail: tech@MedChemExpress.com

Address: 1 Deer Park Dr, Suite Q, Monmouth Junction, NJ 08852, USA