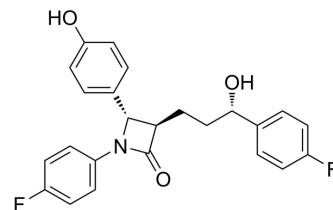


Ezetimibe (Standard)

Cat. No.:	HY-17376R
CAS No.:	163222-33-1
Molecular Formula:	C ₂₄ H ₂₁ F ₂ NO ₃
Molecular Weight:	409.43
Target:	Keap1-Nrf2; Autophagy
Pathway:	NF-κB; Autophagy
Storage:	Please store the product under the recommended conditions in the Certificate of Analysis.



SOLVENT & SOLUBILITY

In Vitro

DMSO : 200 mg/mL (488.48 mM; Need ultrasonic)
 H₂O : < 0.1 mg/mL (ultrasonic;warming;heat to 60°C) (insoluble)

Preparing Stock Solutions	Solvent Concentration	Mass	1 mg	5 mg	10 mg
		1 mM	2.4424 mL	12.2121 mL	24.4242 mL
	5 mM	0.4885 mL	2.4424 mL	4.8848 mL	
	10 mM	0.2442 mL	1.2212 mL	2.4424 mL	

Please refer to the solubility information to select the appropriate solvent.

BIOLOGICAL ACTIVITY

Description

Ezetimibe (Standard) is the analytical standard of Ezetimibe. This product is intended for research and analytical applications. Ezetimibe (SCH 58235) is a potent cholesterol absorption inhibitor. Ezetimibe is a Niemann-Pick C1-like1 (NPC1L1) inhibitor, and is a potent Nrf2 activator.

CUSTOMER VALIDATION

- J Exp Clin Cancer Res. 2019 Sep 13;38(1):404.
- J Chem Inf Model. 2021 Jul 21.
- Front Cell Dev Biol. 18 March 2021.
- Heliyon. 2023 Oct 19.
- Virology. 2023 Jun 21.

See more customer validations on www.MedChemExpress.com

Caution: Product has not been fully validated for medical applications. For research use only.

Tel: 609-228-6898

Fax: 609-228-5909

E-mail: tech@MedChemExpress.com

Address: 1 Deer Park Dr, Suite Q, Monmouth Junction, NJ 08852, USA