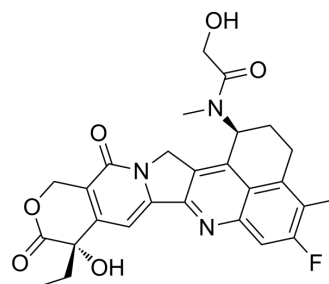


## Exatecan-methylacetamide-OH

<b>Cat. No.:</b>	HY-156849
<b>CAS No.:</b>	2594423-51-3
<b>Molecular Formula:</b>	C <sub>27</sub> H <sub>26</sub> FN <sub>3</sub> O <sub>6</sub>
<b>Molecular Weight:</b>	507.51
<b>Target:</b>	ADC Cytotoxin; Topoisomerase
<b>Pathway:</b>	Antibody-drug Conjugate/ADC Related; Cell Cycle/DNA Damage
<b>Storage:</b>	-20°C, sealed storage, away from moisture * In solvent : -80°C, 6 months; -20°C, 1 month (sealed storage, away from moisture)



### SOLVENT & SOLUBILITY

#### In Vitro

DMSO : 100 mg/mL (197.04 mM; Need ultrasonic)

Solvent	Mass	Concentration		
		1 mg	5 mg	10 mg
Preparing Stock Solutions	1 mM	1.9704 mL	9.8520 mL	19.7040 mL
	5 mM	0.3941 mL	1.9704 mL	3.9408 mL
	10 mM	0.1970 mL	0.9852 mL	1.9704 mL

Please refer to the solubility information to select the appropriate solvent.

### BIOLOGICAL ACTIVITY

#### Description

Exatecan-methylacetamide-OH (compound 6) is a Exatecan derivative with anticancer effects. Exatecan-methylacetamide-OH is an ADC cytotoxin that can be used to synthesize Antibody-Drug Conjugates (ADCs) (CN112125915A; compound 6)<sup>[1]</sup>.

#### IC<sub>50</sub> & Target

Camptothecins

### REFERENCES

[1]. Yi Zhu, et al. Camptothecin derivative and conjugate thereof. CN112125915A.

**Caution: Product has not been fully validated for medical applications. For research use only.**

Tel: 609-228-6898

Fax: 609-228-5909

E-mail: tech@MedChemExpress.com

Address: 1 Deer Park Dr, Suite Q, Monmouth Junction, NJ 08852, USA