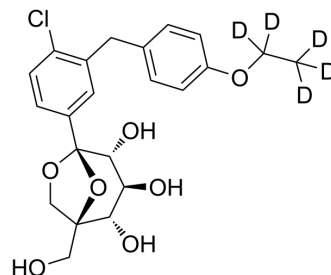


Ertugliflozin-d₅

Cat. No.:	HY-15461S
CAS No.:	1298086-22-2
Molecular Formula:	C ₂₂ H ₂₀ D ₅ ClO ₇
Molecular Weight:	441.91
Target:	SGLT
Pathway:	Membrane Transporter/Ion Channel
Storage:	Please store the product under the recommended conditions in the Certificate of Analysis.



BIOLOGICAL ACTIVITY

Description	Ertugliflozin-d ₅ is the deuterium labeled Ertugliflozin[1]. Ertugliflozin (PF-04971729) is a potent, selective and orally active inhibitor of the sodium-dependent glucose cotransporter 2 (SGLT2), with an IC ₅₀ of 0.877 nM for h-SGLT2[2]. Has the potential for the treatment of type 2 diabetes mellitus[3].
In Vitro	Stable heavy isotopes of hydrogen, carbon, and other elements have been incorporated into drug molecules, largely as tracers for quantitation during the drug development process. Deuteration has gained attention because of its potential to affect the pharmacokinetic and metabolic profiles of drugs ^[1] . MCE has not independently confirmed the accuracy of these methods. They are for reference only.

REFERENCES

- [1]. Russak EM, et al. Impact of Deuterium Substitution on the Pharmacokinetics of Pharmaceuticals. *Ann Pharmacother.* 2019 Feb;53(2):211-216.
- [2]. Mascitti V, et al. Discovery of a clinical candidate from the structurally unique dioxabicyclo[3.2.1]octane class of sodium-dependent glucose cotransporter 2 inhibitors. *J Med Chem.* 2011 Apr 28;54(8):2952-60.
- [3]. Miao Z, et al. Pharmacokinetics, metabolism, and excretion of the antidiabetic agent ertugliflozin (PF-04971729) in healthy male subjects. *Drug Metab Dispos.* 2013 Feb41(2):445-56.
- [4]. Kalgutkar AS, et al. Preclinical species and human disposition of PF-04971729, a selective inhibitor of the sodium-dependent glucose cotransporter 2 and clinical candidate for the treatment of type 2 diabetes mellitus. *Drug Metab Dispos.* 2011 Sep39(9):1609-19.

Caution: Product has not been fully validated for medical applications. For research use only.

Tel: 609-228-6898

Fax: 609-228-5909

E-mail: tech@MedChemExpress.com

Address: 1 Deer Park Dr, Suite Q, Monmouth Junction, NJ 08852, USA