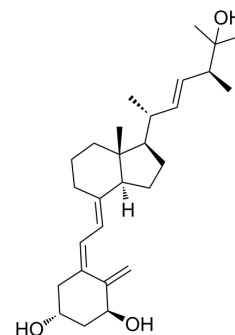


Ercalcitriol

Cat. No.:	HY-32350
CAS No.:	60133-18-8
Molecular Formula:	C ₂₈ H ₄₄ O ₃
Molecular Weight:	428.65
Target:	VD/VDR; Drug Metabolite; Endogenous Metabolite
Pathway:	Vitamin D Related/Nuclear Receptor; Metabolic Enzyme/Protease
Storage:	4°C, protect from light, stored under nitrogen * The compound is unstable in solutions, freshly prepared is recommended.



SOLVENT & SOLUBILITY

In Vitro	DMSO : 100 mg/mL (233.29 mM; Need ultrasonic)				
		Solvent Concentration	Mass 1 mg	5 mg	10 mg
	Preparing Stock Solutions	1 mM	2.3329 mL	11.6645 mL	23.3291 mL
		5 mM	0.4666 mL	2.3329 mL	4.6658 mL
		10 mM	0.2333 mL	1.1665 mL	2.3329 mL
Please refer to the solubility information to select the appropriate solvent.					
In Vivo	<ol style="list-style-type: none"> Add each solvent one by one: 10% DMSO >> 40% PEG300 >> 5% Tween-80 >> 45% saline Solubility: ≥ 2.5 mg/mL (5.83 mM); Clear solution Add each solvent one by one: 10% DMSO >> 90% (20% SBE-β-CD in saline) Solubility: ≥ 2.5 mg/mL (5.83 mM); Clear solution Add each solvent one by one: 10% DMSO >> 90% corn oil Solubility: ≥ 2.5 mg/mL (5.83 mM); Clear solution 				

BIOLOGICAL ACTIVITY

Description	Ercalcitriol (1α,25-Dihydroxy Vitamin D2) is an active metabolite of vitamin D2.
IC₅₀ & Target	Human Endogenous Metabolite

CUSTOMER VALIDATION

- J Lipid Res. 2019 May;60(5):1058-1064.
- J Inorg Biochem. 2023 Sep 12, 112370.

See more customer validations on www.MedChemExpress.com

REFERENCES

[1]. Mawer EB, et al. A sensitive radioimmunoassay using a monoclonal antibody that is equipotent for ercalcitriol and calcitriol (1,25-dihydroxy vitamin D2 and D3). Clin Chim Acta. 1990 Oct 15;190(3):199-209.

[2]. Mawer EB, et al. A sensitive radioimmunoassay using a monoclonal antibody that is equipotent for ercalcitriol and calcitriol (1,25-dihydroxy vitamin D2 and D3). Clin Chim Acta. 1990 Oct 15;190(3):199-209.

Caution: Product has not been fully validated for medical applications. For research use only.

Tel: 609-228-6898

Fax: 609-228-5909

E-mail: tech@MedChemExpress.com

Address: 1 Deer Park Dr, Suite Q, Monmouth Junction, NJ 08852, USA