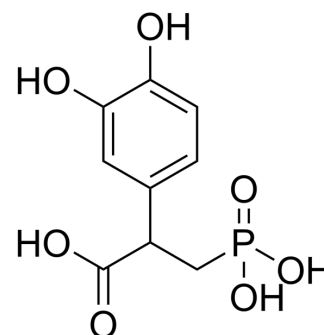


Enzyme-IN-2

Cat. No.:	HY-155521
Molecular Formula:	C ₉ H ₁₁ O ₇ P
Molecular Weight:	262.15
Target:	Bacterial
Pathway:	Anti-infection
Storage:	Please store the product under the recommended conditions in the Certificate of Analysis.



BIOLOGICAL ACTIVITY

Description	Enzyme-IN-2 (compound 15) is a ureases inhibitor ($K_i=2.36 \mu\text{M}$) with anti-ureolytic activity ($\text{IC}_{50}=0.75 \mu\text{M}$) ^[1] .
IC ₅₀ & Target	Ureases ^[1] .

REFERENCES

[1]. Maślanka M, et al. Inhibitory activity of catecholic phosphonic and phosphinic acids against *Helicobacter pylori* ureolysis. *Eur J Med Chem.* 2023 Sep 5;257:115528.

Caution: Product has not been fully validated for medical applications. For research use only.

Tel: 609-228-6898

Fax: 609-228-5909

E-mail: tech@MedChemExpress.com

Address: 1 Deer Park Dr, Suite Q, Monmouth Junction, NJ 08852, USA