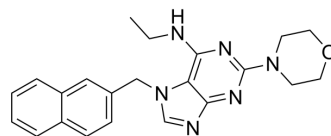


DprE1-IN-6

Cat. No.:	HY-155511
Molecular Formula:	C ₂₂ H ₂₄ N ₆ O
Molecular Weight:	388.47
Target:	Bacterial
Pathway:	Anti-infection
Storage:	Please store the product under the recommended conditions in the Certificate of Analysis.



BIOLOGICAL ACTIVITY

Description

DprE1-IN-6 (Compound 56) is a DprE1 inhibitor. DprE1-IN-6 has anti-TB activity against Mtb H37Rv strain (MIC: 1 μM). DprE1-IN-6 also has antimycobacterial activity against drug-resistant strains. DprE1-IN-6 has high microsomal stability and medium clearance^[1].

REFERENCES

[1]. Finger V, et al. 2,6-Disubstituted 7-(naphthalen-2-ylmethyl)-7H-purines as a new class of potent antitubercular agents inhibiting DprE1. *Eur J Med Chem.* 2023 Oct 5;258:115611.

Caution: Product has not been fully validated for medical applications. For research use only.

Tel: 609-228-6898

Fax: 609-228-5909

E-mail: tech@MedChemExpress.com

Address: 1 Deer Park Dr, Suite Q, Monmouth Junction, NJ 08852, USA