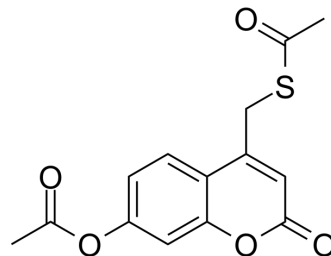


DNA polymerase-IN-2

Cat. No.:	HY-155092
CAS No.:	2953023-80-6
Molecular Formula:	C ₁₄ H ₁₂ O ₅ S
Molecular Weight:	292.31
Target:	DNA/RNA Synthesis
Pathway:	Cell Cycle/DNA Damage
Storage:	Please store the product under the recommended conditions in the Certificate of Analysis.



BIOLOGICAL ACTIVITY

Description

DNA polymerase-IN-2 (Compd 3c), a coumarin derivative, exhibits inhibitory activity against Taq DNA polymerase with IC₅₀ of 48.25 μM, which can be used in value-added disease research^[1].

REFERENCES

[1]. Ezequiel F Bruna-Haupt, et al. Synthesis of Structurally Related Coumarin Derivatives as Antiproliferative Agents. ACS Omega. 2023 Jul 13;8(29):26479-26496.

Caution: Product has not been fully validated for medical applications. For research use only.

Tel: 609-228-6898

Fax: 609-228-5909

E-mail: tech@MedChemExpress.com

Address: 1 Deer Park Dr, Suite Q, Monmouth Junction, NJ 08852, USA