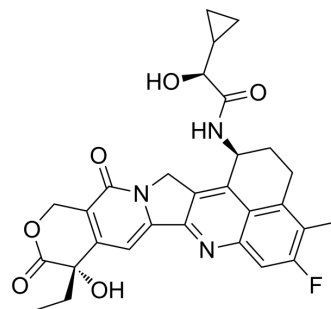


Cyclopropaneacetamide-Exatecan

Cat. No.:	HY-156617
CAS No.:	2414254-36-5
Molecular Formula:	C ₂₉ H ₂₈ FN ₃ O ₆
Molecular Weight:	533.55
Target:	ADC Cytotoxin; Topoisomerase
Pathway:	Antibody-drug Conjugate/ADC Related; Cell Cycle/DNA Damage
Storage:	-20°C, sealed storage, away from moisture and light * In solvent : -80°C, 6 months; -20°C, 1 month (sealed storage, away from moisture and light)



SOLVENT & SOLUBILITY

In Vitro

DMSO : 2 mg/mL (3.75 mM; ultrasonic and warming and heat to 60°C)

Concentration	Mass		
	1 mg	5 mg	10 mg
1 mM	1.8742 mL	9.3712 mL	18.7424 mL
5 mM	---	---	---
10 mM	---	---	---

Please refer to the solubility information to select the appropriate solvent.

BIOLOGICAL ACTIVITY

Description

Cyclopropaneacetamide-Exatecan (Compound 2-A) is an ADC Cytotoxin and an Exatecan analogue. Cyclopropaneacetamide-Exatecan can be used in the synthesis of ADC such as anti-B7H3 antibody-Exatecan analogue conjugate (compound ADC-2)^[1].

IC₅₀ & Target

Camptothecins

REFERENCES

[1]. Ying Hua, et al. Anti-b7h3 antibody-exatecan analog conjugate and medicinal use thereof. Patent WO2020063673A1.

Caution: Product has not been fully validated for medical applications. For research use only.

Tel: 609-228-6898

Fax: 609-228-5909

E-mail: tech@MedChemExpress.com

Address: 1 Deer Park Dr, Suite Q, Monmouth Junction, NJ 08852, USA