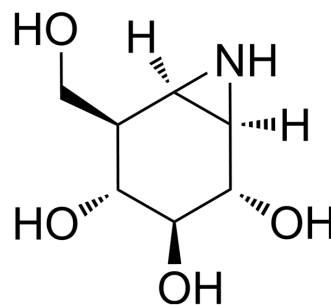


Cyclophellitol aziridine

Cat. No.:	HY-156838
CAS No.:	136861-97-7
Molecular Formula:	C ₇ H ₁₃ NO ₄
Molecular Weight:	175.18
Target:	Glucosidase
Pathway:	Metabolic Enzyme/Protease
Storage:	4°C, sealed storage, away from moisture and light * In solvent : -80°C, 6 months; -20°C, 1 month (sealed storage, away from moisture and light)



BIOLOGICAL ACTIVITY

Description	Cyclophellitol aziridine is a cyclophenol analogue and a potent β -glucosidase inhibitor ^[1] .
IC ₅₀ & Target	β -Glucosidase ^[1]

REFERENCES

[1]. Li KY, et al. Exploring functional cyclophellitol analogues as human retaining beta-glucosidase inhibitors. *Org Biomol Chem*. 2014 Oct 21;12(39):7786-91.

Caution: Product has not been fully validated for medical applications. For research use only.

Tel: 609-228-6898

Fax: 609-228-5909

E-mail: tech@MedChemExpress.com

Address: 1 Deer Park Dr, Suite Q, Monmouth Junction, NJ 08852, USA