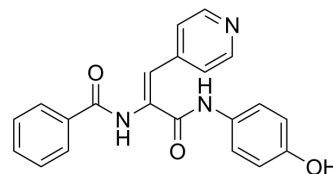


## Casein kinase 1δ-IN-10

Cat. No.:	HY-156040
CAS No.:	332074-85-8
Molecular Formula:	C <sub>21</sub> H <sub>17</sub> N <sub>3</sub> O <sub>3</sub>
Molecular Weight:	359.38
Target:	Casein Kinase
Pathway:	Cell Cycle/DNA Damage; Stem Cell/Wnt
Storage:	Please store the product under the recommended conditions in the Certificate of Analysis.



### BIOLOGICAL ACTIVITY

Description	Casein kinase 1δ-IN-10 is a casein kinase 1δ (CK1δ) inhibitor (WO2012080729A2; compound 685) <sup>[1]</sup> .
IC <sub>50</sub> & Target	CK1δ

### REFERENCES

[1]. Joseph M. Sheridan, et al. CASEIN KINASE 1δ (CK1δ) INHIBITORS. WO2012080729A2

**Caution: Product has not been fully validated for medical applications. For research use only.**

Tel: 609-228-6898

Fax: 609-228-5909

E-mail: tech@MedChemExpress.com

Address: 1 Deer Park Dr, Suite Q, Monmouth Junction, NJ 08852, USA