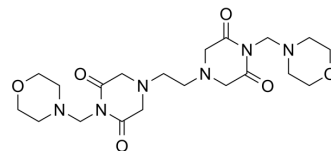


Bimolane

| | |
|--------------------|---|
| Cat. No.: | HY-19437 |
| CAS No.: | 74550-97-3 |
| Molecular Formula: | C ₂₀ H ₃₂ N ₆ O ₆ |
| Molecular Weight: | 452.5 |
| Target: | Topoisomerase |
| Pathway: | Cell Cycle/DNA Damage |
| Storage: | Please store the product under the recommended conditions in the Certificate of Analysis. |



BIOLOGICAL ACTIVITY

| | |
|---------------------------|--|
| Description | Bimolane (AT-1727), a human topoisomerase II inhibitor, can be used as an anti-neoplastic agent and for the research of psoriasis. Bimolane shows leukemogenic activity and induces multiple types of chromosomal aberrations in human lymphocytes ^{[1][2]} . |
| IC ₅₀ & Target | Topoisomerase II |

REFERENCES

- [1]. Frantz CE, et, al. Bimolane: in vitro inhibitor of human topoisomerase II. *Cancer Lett.* 1997 Dec 9;120(2):135-40.
- [2]. Roy SK, et, al. Bimolane induces multiple types of chromosomal aberrations in human lymphocytes in vitro. *Mutat Res.* 2011 Dec 24;726(2):181-7.

Caution: Product has not been fully validated for medical applications. For research use only.

Tel: 609-228-6898

Fax: 609-228-5909

E-mail: tech@MedChemExpress.com

Address: 1 Deer Park Dr, Suite Q, Monmouth Junction, NJ 08852, USA