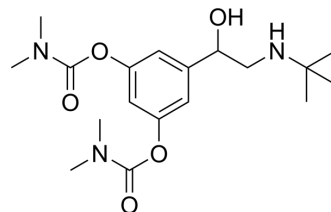


## Bambuterol

Cat. No.:	HY-17501
CAS No.:	81732-65-2
Molecular Formula:	C <sub>18</sub> H <sub>29</sub> N <sub>3</sub> O <sub>5</sub>
Molecular Weight:	367.44
Target:	Adrenergic Receptor
Pathway:	GPCR/G Protein; Neuronal Signaling
Storage:	Please store the product under the recommended conditions in the Certificate of Analysis.



### BIOLOGICAL ACTIVITY

Description	Bambuterol ((±)-Bambuterol; KWD-2183) is a long acting beta-adrenoceptor agonist (LABA) used in the treatment of asthma; it also is a proagent of terbutaline.
IC <sub>50</sub> & Target	beta-adrenoceptor
In Vitro	Bambuterol ((±)-Bambuterol; KWD-2183) is contraindicated in pregnancy and in people with seriously impaired liver function. It can be used by people with renal impairment, but dose adjustments are necessary. The adverse effect profile of bambuterol is similar to that of salbutamol, and may include fatigue, nausea, palpitations, headache, dizziness and tremor. MCE has not independently confirmed the accuracy of these methods. They are for reference only.

### CUSTOMER VALIDATION

- Research Square Preprint. 2022 Feb.

See more customer validations on [www.MedChemExpress.com](http://www.MedChemExpress.com)

### REFERENCES

[1]. Bambuterol, From Wikipedia

**Caution: Product has not been fully validated for medical applications. For research use only.**

Tel: 609-228-6898

Fax: 609-228-5909

E-mail: [tech@MedChemExpress.com](mailto:tech@MedChemExpress.com)

Address: 1 Deer Park Dr, Suite Q, Monmouth Junction, NJ 08852, USA