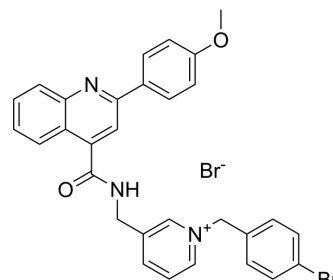


## BChE-IN-21

Cat. No.:	HY-155369
Molecular Formula:	C <sub>30</sub> H <sub>25</sub> Br <sub>2</sub> N <sub>3</sub> O <sub>2</sub>
Molecular Weight:	619.35
Target:	Cholinesterase (ChE)
Pathway:	Neuronal Signaling
Storage:	Please store the product under the recommended conditions in the Certificate of Analysis.



## BIOLOGICAL ACTIVITY

### Description

BChE-IN-21 is a potent BChE inhibitor with an IC<sub>50</sub> of 0.14 ± 0.02 μM. BChE-IN-21 has the potential for Alzheimer's disease research<sup>[1]</sup>.

## REFERENCES

[1]. Milad Noori, et al. Phenyl-quinoline derivatives as a lead structure of cholinesterase inhibitor endowed with potency to reduce the GSK-3β level targeting Alzheimer's disease. *Int J Biol Macromol.* 2023 Oct 10:127392.

**Caution: Product has not been fully validated for medical applications. For research use only.**

Tel: 609-228-6898

Fax: 609-228-5909

E-mail: tech@MedChemExpress.com

Address: 1 Deer Park Dr, Suite Q, Monmouth Junction, NJ 08852, USA