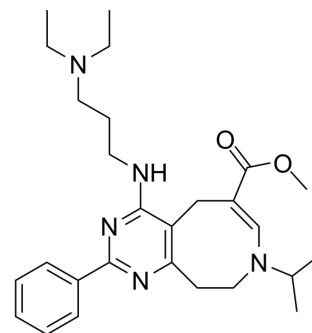


BChE-IN-20

Cat. No.:	HY-155368
CAS No.:	1428439-79-5
Molecular Formula:	C ₂₇ H ₃₉ N ₅ O ₂
Molecular Weight:	465.63
Target:	Cholinesterase (ChE)
Pathway:	Neuronal Signaling
Storage:	Please store the product under the recommended conditions in the Certificate of Analysis.



BIOLOGICAL ACTIVITY

Description

BChE-IN-20 (compound 7c) is a highly potent BChE-selective inhibitor and exhibits IC₅₀s of 105 and 2.3 nM for eqBChE and hBChE, respectively. BChE-IN-20 inhibits P glycoprotein with IC₅₀ of 0.27 μM. BChE-IN-20 is a promising template to improve design and development of BChE-selective ligands of pharmaceutical interest, including inhibitors and fluorogenic probes.

REFERENCES

[1]. Modesto de Candia, et al. In-vitro and in-silico studies of annelated 1,4,7,8-tetrahydroazocine ester derivatives as nanomolar selective inhibitors of human butyrylcholinesterase. Chem Biol Interact. 2023 Oct 13:386:110741.

Caution: Product has not been fully validated for medical applications. For research use only.

Tel: 609-228-6898

Fax: 609-228-5909

E-mail: tech@MedChemExpress.com

Address: 1 Deer Park Dr, Suite Q, Monmouth Junction, NJ 08852, USA