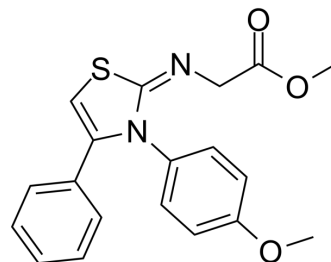


Anticancer agent 121

Cat. No.:	HY-154865
CAS No.:	2924532-47-6
Molecular Formula:	C ₁₉ H ₁₈ N ₂ O ₃ S
Molecular Weight:	354.42
Target:	Lactate Dehydrogenase
Pathway:	Metabolic Enzyme/Protease
Storage:	Please store the product under the recommended conditions in the Certificate of Analysis.



BIOLOGICAL ACTIVITY

Description	Anticancer agent 121, an inhibitor of human lactate dehydrogenase A enzyme (<i>h</i> LDHA), has good anticancer activities and can be used for anticancer research ^[1] .								
In Vitro	<p>Anticancer agent 121 (Compound 8j) (0-100 μM; 72 hours) has selective inhibition in HeLa and SiHa cervical cancer cell lines and has not noticeable toxicity in human embryonic kidney cell line HEK293 cells^[1].</p> <p>MCE has not independently confirmed the accuracy of these methods. They are for reference only.</p> <p>Cell Viability Assay^[1]</p> <table border="1"> <tr> <td>Cell Line:</td> <td>HEK293, HepG2, HeLa and SiHa</td> </tr> <tr> <td>Concentration:</td> <td>0-100 μM</td> </tr> <tr> <td>Incubation Time:</td> <td>72 hours</td> </tr> <tr> <td>Result:</td> <td>Inhibited cell growth with IC₅₀s of 7.9 μM, 6.75 μM and 2.32 μM for HepG2, HeLa and SiHa cell lines. Had not noticeable toxicity in HEK293.</td> </tr> </table>	Cell Line:	HEK293, HepG2, HeLa and SiHa	Concentration:	0-100 μM	Incubation Time:	72 hours	Result:	Inhibited cell growth with IC ₅₀ s of 7.9 μM, 6.75 μM and 2.32 μM for HepG2, HeLa and SiHa cell lines. Had not noticeable toxicity in HEK293.
Cell Line:	HEK293, HepG2, HeLa and SiHa								
Concentration:	0-100 μM								
Incubation Time:	72 hours								
Result:	Inhibited cell growth with IC ₅₀ s of 7.9 μM, 6.75 μM and 2.32 μM for HepG2, HeLa and SiHa cell lines. Had not noticeable toxicity in HEK293.								

REFERENCES

[1]. Sharma D, et.al.Design and Synthesis of Thiazole Scaffold-Based Small Molecules as Anticancer Agents Targeting the Human Lactate Dehydrogenase A Enzyme. ACS Omega. 2023 May 10;8(20):17552-17562.

Caution: Product has not been fully validated for medical applications. For research use only.

Tel: 609-228-6898

Fax: 609-228-5909

E-mail: tech@MedChemExpress.com

Address: 1 Deer Park Dr, Suite Q, Monmouth Junction, NJ 08852, USA