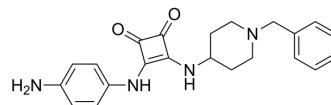


AChE-IN-30

Cat. No.:	HY-155022
CAS No.:	2937454-22-1
Molecular Formula:	C ₂₂ H ₂₄ N ₄ O ₂
Molecular Weight:	376.45
Target:	Cholinesterase (ChE)
Pathway:	Neuronal Signaling
Storage:	Please store the product under the recommended conditions in the Certificate of Analysis.



BIOLOGICAL ACTIVITY

Description

AChE-IN-30 is an AChE inhibitor with an IC₅₀ value of 4.4 μM. AChE-IN-30 has neuroprotective activity, and inhibits H₂O₂-induced apoptosis by suppressing intracellular ROS accumulation. AChE-IN-30 can be used for research of Alzheimer's disease^[1].

REFERENCES

[1]. Wan D, et al. Design, Synthesis, and Biological Activity of Donepezil: Aromatic Amine Hybrids as Anti-Alzheimer's Drugs. ACS Omega. 2023 Jun 5;8(24):21802-21812.

Caution: Product has not been fully validated for medical applications. For research use only.

Tel: 609-228-6898

Fax: 609-228-5909

E-mail: tech@MedChemExpress.com

Address: 1 Deer Park Dr, Suite Q, Monmouth Junction, NJ 08852, USA