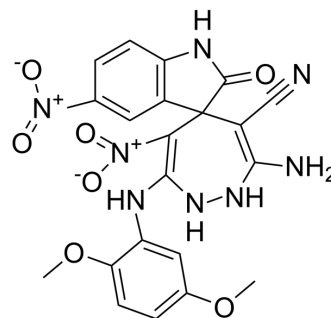


AChE/BChE-IN-13

Cat. No.:	HY-155708
Molecular Formula:	C ₂₁ H ₁₈ N ₈ O ₇
Molecular Weight:	494.42
Target:	Cholinesterase (ChE)
Pathway:	Neuronal Signaling
Storage:	Please store the product under the recommended conditions in the Certificate of Analysis.



BIOLOGICAL ACTIVITY

Description

AChE/BChE-IN-13 (compound 5j) is a potent dual inhibitor of AChE and BChE with IC₅₀s of 20.89 and 17.37 μM, respectively. AChE/BChE-IN-13 can be used in Alzheimer's disease (AD) research^[1].

REFERENCES

[1]. Pourtaher H, et al. The anti-Alzheimer potential of novel spiroindolin-1,2-diazepine derivatives as targeted cholinesterase inhibitors with modified substituents. Sci Rep. 2023 Jul 24;13(1):11952.

Caution: Product has not been fully validated for medical applications. For research use only.

Tel: 609-228-6898

Fax: 609-228-5909

E-mail: tech@MedChemExpress.com

Address: 1 Deer Park Dr, Suite Q, Monmouth Junction, NJ 08852, USA