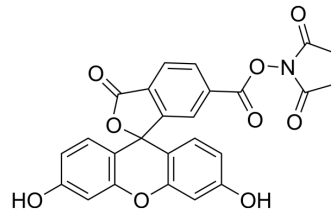


6-FAM SE

Cat. No.:	HY-15939
CAS No.:	92557-81-8
Molecular Formula:	C ₂₅ H ₁₅ NO ₉
Molecular Weight:	473.39
Target:	Fluorescent Dye
Pathway:	Others
Storage:	-20°C, protect from light * In solvent : -80°C, 6 months; -20°C, 1 month (protect from light)



SOLVENT & SOLUBILITY

In Vitro	DMSO : 50 mg/mL (105.62 mM; Need ultrasonic)				
		Solvent Concentration	Mass		
	Preparing Stock Solutions		1 mg	5 mg	10 mg
		1 mM	2.1124 mL	10.5621 mL	21.1242 mL
		5 mM	0.4225 mL	2.1124 mL	4.2248 mL
	10 mM	0.2112 mL	1.0562 mL	2.1124 mL	
Please refer to the solubility information to select the appropriate solvent.					
In Vivo	1. Add each solvent one by one: 10% DMSO >> 40% PEG300 >> 5% Tween-80 >> 45% saline Solubility: ≥ 2.5 mg/mL (5.28 mM); Clear solution				
	2. Add each solvent one by one: 10% DMSO >> 90% (20% SBE-β-CD in saline) Solubility: ≥ 2.5 mg/mL (5.28 mM); Clear solution				

BIOLOGICAL ACTIVITY

Description	6-FAM SE is another isomer of carboxyfluorescein. 6-FAM, SE is mainly used in sequencing of nucleic acids and labeling nucleotides.
-------------	---

Caution: Product has not been fully validated for medical applications. For research use only.

Tel: 609-228-6898

Fax: 609-228-5909

E-mail: tech@MedChemExpress.com

Address: 1 Deer Park Dr, Suite Q, Monmouth Junction, NJ 08852, USA