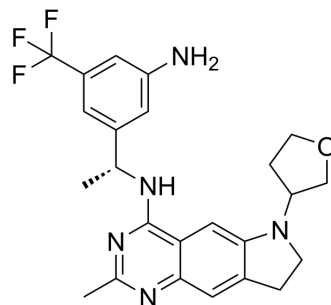


SOS1/KRAS-IN-1

Cat. No.:	HY-153940
CAS No.:	2836330-34-6
Molecular Formula:	C ₂₄ H ₂₆ F ₃ N ₅ O
Molecular Weight:	457.49
Target:	Ras
Pathway:	GPCR/G Protein
Storage:	Please store the product under the recommended conditions in the Certificate of Analysis.



BIOLOGICAL ACTIVITY

Description

SOS1/KRAS-IN-1(Compound 2) is a SOS1/KRAS inhibitor, which can be used in the research of SOS1/KRAS-mediated diseases^[1].

REFERENCES

[1]. SOS1 inhibitor heterocyclic compounds. CN115028644.

Caution: Product has not been fully validated for medical applications. For research use only.

Tel: 609-228-6898

Fax: 609-228-5909

E-mail: tech@MedChemExpress.com

Address: 1 Deer Park Dr, Suite Q, Monmouth Junction, NJ 08852, USA