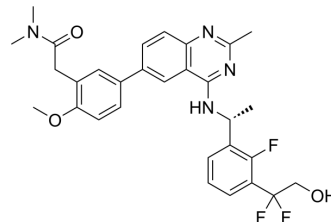


## SOS1-IN-16

Cat. No.:	HY-153989
CAS No.:	2930763-85-0
Molecular Formula:	C <sub>30</sub> H <sub>31</sub> F <sub>3</sub> N <sub>4</sub> O <sub>3</sub>
Molecular Weight:	552.59
Target:	Ras; Cytochrome P450
Pathway:	GPCR/G Protein; Metabolic Enzyme/Protease
Storage:	Please store the product under the recommended conditions in the Certificate of Analysis.



### BIOLOGICAL ACTIVITY

#### Description

SOS1-IN-16 (Comp 54) is a selective inhibitor of SOS1 with an IC<sub>50</sub> of 7.2 nM. SOS1-IN-16 has inhibitory activity of CYP3A4 when using testosterone as a substrate, with an IC<sub>50</sub> of 8.9 μM. SOS1-IN-16 can be used for cancer research<sup>[1]</sup>.

### REFERENCES

[1]. Chen SJ, et.al. Polysubstituted benzazepine heteroaryl derivative and application thereof

**Caution: Product has not been fully validated for medical applications. For research use only.**

Tel: 609-228-6898

Fax: 609-228-5909

E-mail: tech@MedChemExpress.com

Address: 1 Deer Park Dr, Suite Q, Monmouth Junction, NJ 08852, USA