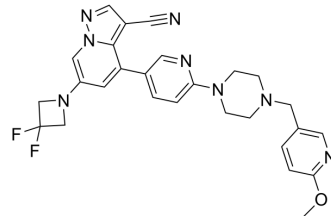


RET-IN-24

Cat. No.:	HY-153941
CAS No.:	2583767-68-2
Molecular Formula:	C ₂₇ H ₂₆ F ₂ N ₈ O
Molecular Weight:	516.55
Target:	RET
Pathway:	Protein Tyrosine Kinase/RTK
Storage:	Please store the product under the recommended conditions in the Certificate of Analysis.



BIOLOGICAL ACTIVITY

Description

RET-IN-24 (Compound 26) is a selective RET tyrosine kinase inhibitor with antitumor activity^[1].

REFERENCES

[1]. Ret selective inhibitor, preparation method therefor and use thereof.WO2021008455.

Caution: Product has not been fully validated for medical applications. For research use only.

Tel: 609-228-6898

Fax: 609-228-5909

E-mail: tech@MedChemExpress.com

Address: 1 Deer Park Dr, Suite Q, Monmouth Junction, NJ 08852, USA