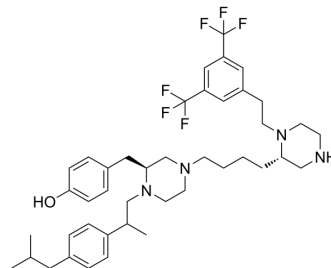


PAT-IN-2

Cat. No.:	HY-153177
CAS No.:	2066572-01-6
Molecular Formula:	C ₄₂ H ₅₆ F ₆ N ₄ O
Molecular Weight:	746.91
Target:	Ras
Pathway:	GPCR/G Protein
Storage:	Please store the product under the recommended conditions in the Certificate of Analysis.



BIOLOGICAL ACTIVITY

Description	PAT-IN-2 is a protein acyl transferases (PAT) inhibitor. PAT-IN-2 competitively inhibits Erf2 autopalmitylation (WO2017011518A1; compound 25) ^[1] .
In Vitro	PAT-IN-2 (compound 25) completely inhibits growth of RJY1941 (control) at 20 μM, but has no detectable effect at lower concentrations. PAT-IN-2 inhibits the growth of RJY1942 (palmitylation sensitive) at 5 μM ^[1] . MCE has not independently confirmed the accuracy of these methods. They are for reference only.

REFERENCES

[1]. Robert Joseph DESCHENES, et al. Protein acyl transferase inhibitors and methods of treatment. WO2017011518A1.

Caution: Product has not been fully validated for medical applications. For research use only.

Tel: 609-228-6898

Fax: 609-228-5909

E-mail: tech@MedChemExpress.com

Address: 1 Deer Park Dr, Suite Q, Monmouth Junction, NJ 08852, USA