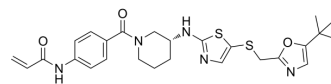


MFH290

Cat. No.:	HY-153244		
CAS No.:	2088715-91-5		
Molecular Formula:	C ₂₆ H ₃₁ N ₅ O ₃ S ₂		
Molecular Weight:	525.69		
Target:	CDK		
Pathway:	Cell Cycle/DNA Damage		
Storage:	Powder	-20°C	3 years
	In solvent	-80°C	6 months
		-20°C	1 month



SOLVENT & SOLUBILITY

In Vitro

DMSO : 125 mg/mL (237.78 mM; Need ultrasonic)

Concentration	Solvent	Mass		
		1 mg	5 mg	10 mg
Preparing Stock Solutions	1 mM	1.9023 mL	9.5113 mL	19.0226 mL
	5 mM	0.3805 mL	1.9023 mL	3.8045 mL
	10 mM	0.1902 mL	0.9511 mL	1.9023 mL

Please refer to the solubility information to select the appropriate solvent.

BIOLOGICAL ACTIVITY

Description

MFH290 is a potent and highly selective cyclin-dependent kinase 12/13 (CDK12/13) covalent inhibitor. MFH290 forms a covalent bond with Cys-1039 of CDK12 and exhibits excellent kinome selectivity and inhibits the phosphorylation of serine-2 in the C-terminal domain (CTD) of RNA-polymerase II (Pol II). MFH290 is used for cancer research^[1].

IC₅₀ & Target

IC₅₀: CDK12/13

REFERENCES

- [1]. Yao Liu, et al. Discovery of MFH290: A Potent and Highly Selective Covalent Inhibitor for Cyclin-Dependent Kinase 12/13. *J Med Chem.* 2020 Jul 9;63(13):6708-6726.
- [2]. Yao Liu, et al. Discovery of MFH290: A Potent and Highly Selective Covalent Inhibitor for Cyclin-Dependent Kinase 12/13. *J Med Chem.* 2020 Jul 9;63(13):6708-6726.

Caution: Product has not been fully validated for medical applications. For research use only.

Tel: 609-228-6898

Fax: 609-228-5909

E-mail: tech@MedChemExpress.com

Address: 1 Deer Park Dr, Suite Q, Monmouth Junction, NJ 08852, USA