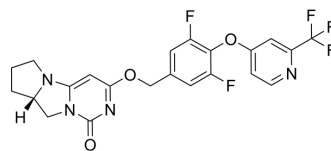


## Lp-PLA2-IN-15

Cat. No.:	HY-153561
CAS No.:	1865796-11-7
Molecular Formula:	C <sub>22</sub> H <sub>17</sub> F <sub>5</sub> N <sub>4</sub> O <sub>3</sub>
Molecular Weight:	480.39
Target:	Phospholipase
Pathway:	Metabolic Enzyme/Protease
Storage:	Please store the product under the recommended conditions in the Certificate of Analysis.



### BIOLOGICAL ACTIVITY

#### Description

Lp-PLA2-IN-15 (example 2) is a lipoprotein-associated phospholipase A2 (Lp-PLA 2) inhibitor, which can be used in the research of Alzheimer's disease, etc<sup>[1]</sup>.

### REFERENCES

[1]. Zehong Wan, et al. Compounds. WO2016011930.

**Caution: Product has not been fully validated for medical applications. For research use only.**

Tel: 609-228-6898

Fax: 609-228-5909

E-mail: tech@MedChemExpress.com

Address: 1 Deer Park Dr, Suite Q, Monmouth Junction, NJ 08852, USA