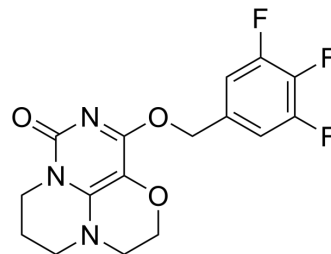


Lp-PLA2-IN-14

Cat. No.:	HY-153560
CAS No.:	2756855-66-8
Molecular Formula:	C ₁₆ H ₁₄ F ₃ N ₃ O ₃
Molecular Weight:	353.3
Target:	Phospholipase
Pathway:	Metabolic Enzyme/Protease
Storage:	Please store the product under the recommended conditions in the Certificate of Analysis.



BIOLOGICAL ACTIVITY

Description	Lp-PLA2-IN-14 (Compound 19) is an Lp-PLA2 inhibitor with a pIC ₅₀ of 8.4 against rhLp-PLA2. Lp-PLA2-IN-14 can be used for the research of neurodegenerative related diseases, such as Alzheimer Disease (AD), glaucoma, age-related macular degeneration (AMD) or cardiovascular diseases including atherosclerosis and the like ^[1] .
IC ₅₀ & Target	rhLp-PLA2 8.4 (pIC ₅₀)

REFERENCES

[1]. Zhenghua Gu, et al. Tricyclic pyrimidone compounds, preparation method, composition and application thereof. Patent CN113861220A.

Caution: Product has not been fully validated for medical applications. For research use only.

Tel: 609-228-6898

Fax: 609-228-5909

E-mail: tech@MedChemExpress.com

Address: 1 Deer Park Dr, Suite Q, Monmouth Junction, NJ 08852, USA