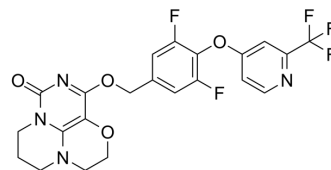


## Lp-PLA2-IN-13

Cat. No.:	HY-153559		
CAS No.:	2756855-62-4		
Molecular Formula:	C <sub>22</sub> H <sub>17</sub> F <sub>5</sub> N <sub>4</sub> O <sub>4</sub>		
Molecular Weight:	496.39		
Target:	Phospholipase		
Pathway:	Metabolic Enzyme/Protease		
Storage:	Powder	-20°C	3 years
		4°C	2 years
	In solvent	-80°C	6 months
		-20°C	1 month



### BIOLOGICAL ACTIVITY

Description	Lp-PLA2-IN-13 (compound 15) is a potent Lp-PLA2 inhibitor. Lp-PLA2-IN-13 has the potential for the research of neurodegenerative related diseases <sup>[1]</sup> .
IC <sub>50</sub> & Target	Lp-PLA2 <sup>[1]</sup>

### REFERENCES

[1]. ZhengHua Gu, et al. Tricyclic pyrimidone compounds, preparation method, composition and application thereof. CN113861220A.

**Caution: Product has not been fully validated for medical applications. For research use only.**

Tel: 609-228-6898

Fax: 609-228-5909

E-mail: tech@MedChemExpress.com

Address: 1 Deer Park Dr, Suite Q, Monmouth Junction, NJ 08852, USA