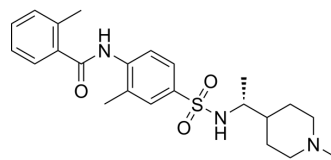


## IPG7236

Cat. No.:	HY-153670
CAS No.:	2756350-91-9
Molecular Formula:	C <sub>23</sub> H <sub>31</sub> N <sub>3</sub> O <sub>3</sub> S
Molecular Weight:	429.58
Target:	CCR
Pathway:	GPCR/G Protein; Immunology/Inflammation
Storage:	Please store the product under the recommended conditions in the Certificate of Analysis.



### BIOLOGICAL ACTIVITY

Description	IPG7236 is a selective CCR8 antagonist. IPG7236 exhibits significant tumor suppression in a mouse xenograft model of human breast cancer. IPG7236 can be used in cancer research <sup>[1]</sup> .
IC <sub>50</sub> & Target	CCR8 <sup>[1]</sup> .

### REFERENCES

[1]. Wu Y, et al. Discovery of a Potent and Selective CCR8 Small Molecular Antagonist IPG7236 for the Treatment of Cancer. J Med Chem. 2023 Apr 13;66(7):4548-4564.

**Caution: Product has not been fully validated for medical applications. For research use only.**

Tel: 609-228-6898

Fax: 609-228-5909

E-mail: tech@MedChemExpress.com

Address: 1 Deer Park Dr, Suite Q, Monmouth Junction, NJ 08852, USA