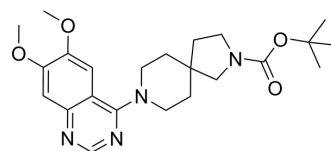


Enpp-1-IN-16

Cat. No.:	HY-153335		
CAS No.:	2289739-47-3		
Molecular Formula:	C ₂₃ H ₃₂ N ₄ O ₄		
Molecular Weight:	428.52		
Target:	Phosphodiesterase (PDE)		
Pathway:	Metabolic Enzyme/Protease		
Storage:	Powder	-20°C	3 years
		4°C	2 years
	In solvent	-80°C	6 months
		-20°C	1 month



SOLVENT & SOLUBILITY

In Vitro

DMSO : 2 mg/mL (4.67 mM; Need ultrasonic)

Concentration	Solvent	Mass		
		1 mg	5 mg	10 mg
1 mM		2.3336 mL	11.6681 mL	23.3361 mL
5 mM		---	---	---
10 mM		---	---	---

Please refer to the solubility information to select the appropriate solvent.

BIOLOGICAL ACTIVITY

Description

Enpp-1-IN-16 (compound 54) is an ENPP1 inhibitor. Enpp-1-IN-16 has the potential to study cancer, especially in cases of high ENPP1 expression or elevated cytoplasmic DNA levels. Enpp-1-IN-16 can also be used in other diseases mediated by ENPP1, such as bacterial or viral infections, insulin resistance and type II diabetes, chondrocalcinosis and osteoarthritis, calcium pyrophosphate deposition disorder (CPPD), low Phosphatase disease and soft tissue calcification disorders^[1].

REFERENCES

[1]. Derek A Cogan, et al. Imino sulfanone inhibitors of enpp1. WO2021225969A1.

Caution: Product has not been fully validated for medical applications. For research use only.

Tel: 609-228-6898

Fax: 609-228-5909

E-mail: tech@MedChemExpress.com

Address: 1 Deer Park Dr, Suite Q, Monmouth Junction, NJ 08852, USA