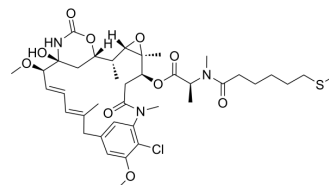


## DM-CO-(CH<sub>2</sub>)<sub>5</sub>-SMe

Cat. No.:	HY-153043
CAS No.:	2243689-84-9
Molecular Formula:	C <sub>39</sub> H <sub>56</sub> ClN <sub>3</sub> O <sub>10</sub> S
Molecular Weight:	794.39
Target:	Drug Metabolite
Pathway:	Metabolic Enzyme/Protease
Storage:	Please store the product under the recommended conditions in the Certificate of Analysis.



### BIOLOGICAL ACTIVITY

<b>Description</b>	DM-CO-(CH <sub>2</sub> ) <sub>5</sub> -SMe is an anticancer agent derived from antibody-drug conjugates (ADC) metabolite with cytotoxicity to H1703, H1975, COLO704 and Colo720E cells <sup>[1]</sup> .
<b>In Vitro</b>	DM-CO-(CH <sub>2</sub> ) <sub>5</sub> -SMe (Compound 25 a) (0.00008-30 nM; 5 d) inhibits the viability of H1703, H1975 and COLO704 cells with IC <sub>50</sub> values of 2.27 pM, 0.893 pM and 3.04 pM, respectively <sup>[1]</sup> . DM-CO-(CH <sub>2</sub> ) <sub>5</sub> -SMe inhibits the viability of Colo720E cells with an IC <sub>50</sub> value of 3 pM <sup>[1]</sup> . MCE has not independently confirmed the accuracy of these methods. They are for reference only.

### REFERENCES

[1]. Widdison, et al. Preparation of maytansinoid derivatives with self-immolative peptide linkers and their conjugates as antitumor agents. World Intellectual Property Organization. WO2018160539.

**Caution: Product has not been fully validated for medical applications. For research use only.**

Tel: 609-228-6898

Fax: 609-228-5909

E-mail: tech@MedChemExpress.com

Address: 1 Deer Park Dr, Suite Q, Monmouth Junction, NJ 08852, USA