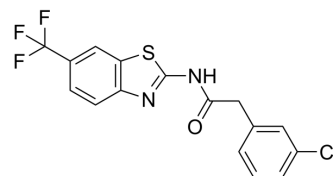


Casein kinase 1δ-IN-6

| | | | |
|---------------------------|--|-------|----------|
| Cat. No.: | HY-153905 | | |
| CAS No.: | 1579991-01-7 | | |
| Molecular Formula: | C ₁₆ H ₁₀ ClF ₃ N ₂ OS | | |
| Molecular Weight: | 370.78 | | |
| Target: | Casein Kinase | | |
| Pathway: | Cell Cycle/DNA Damage; Stem Cell/Wnt | | |
| Storage: | Powder | -20°C | 3 years |
| | | 4°C | 2 years |
| | In solvent | -80°C | 6 months |
| | | -20°C | 1 month |



SOLVENT & SOLUBILITY

In Vitro

DMSO : 125 mg/mL (337.13 mM; Need ultrasonic)

| Concentration | Solvent | Mass | | |
|---------------------------|---------|-----------|------------|------------|
| | | 1 mg | 5 mg | 10 mg |
| Preparing Stock Solutions | 1 mM | 2.6970 mL | 13.4851 mL | 26.9702 mL |
| | 5 mM | 0.5394 mL | 2.6970 mL | 5.3940 mL |
| | 10 mM | 0.2697 mL | 1.3485 mL | 2.6970 mL |

Please refer to the solubility information to select the appropriate solvent.

BIOLOGICAL ACTIVITY

Description

Casein kinase 1δ-IN-6 is a potent and selective protein kinase CK-1δ inhibitor with an IC₅₀ of 23 nM. Casein kinase 1δ-IN-6 shows neuroprotective and anti-inflammatory properties both in vitro and in vivo. Casein kinase 1δ-IN-6 is a promising drug candidate and can be used for neurodegenerative diseases research.

REFERENCES

[1]. José A Morales-García, et al. Biological and Pharmacological Characterization of Benzothiazole-Based CK-1δ Inhibitors in Models of Parkinson's Disease. ACS Omega. 2017 Aug 31;2(8):5215-5220.

Caution: Product has not been fully validated for medical applications. For research use only.

Tel: 609-228-6898

Fax: 609-228-5909

E-mail: tech@MedChemExpress.com

Address: 1 Deer Park Dr, Suite Q, Monmouth Junction, NJ 08852, USA