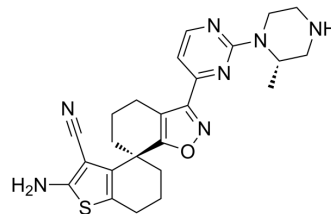


BI-2493

Cat. No.:	HY-153723		
CAS No.:	2937344-16-4		
Molecular Formula:	C ₂₄ H ₂₇ N ₇ OS		
Molecular Weight:	461.58		
Target:	Ras		
Pathway:	GPCR/G Protein; MAPK/ERK Pathway		
Storage:	Powder	-20°C	3 years
		4°C	2 years
	In solvent	-80°C	6 months
		-20°C	1 month



SOLVENT & SOLUBILITY

In Vitro

DMSO : 50 mg/mL (108.32 mM; Need ultrasonic)

Concentration	Mass		
	1 mg	5 mg	10 mg
1 mM	2.1665 mL	10.8324 mL	21.6647 mL
5 mM	0.4333 mL	2.1665 mL	4.3329 mL
10 mM	0.2166 mL	1.0832 mL	2.1665 mL

Please refer to the solubility information to select the appropriate solvent.

BIOLOGICAL ACTIVITY

Description

BI-2493 is a structural analogue of BI-2865 and a highly selective pan-KRAS inhibitor. BI-2493 can attenuate tumor growth. BI-2493 can be used for cancer diseases research^[1].

IC₅₀ & Target

K-Ras WT

REFERENCES

[1]. Kim D, et al. Pan-KRAS inhibitor disables oncogenic signalling and tumour growth. Nature. 2023 Jul;619(7968):160-166.

Caution: Product has not been fully validated for medical applications. For research use only.

Tel: 609-228-6898

Fax: 609-228-5909

E-mail: tech@MedChemExpress.com

Address: 1 Deer Park Dr, Suite Q, Monmouth Junction, NJ 08852, USA